

New



ZenFlex™ ONE

Reciprocating File System

With the perfect balance of durability and high cutting efficiency. ZenFlex ONE gives you more confidence and a smooth finish you can trust.



High Cutting Efficiency

Proprietary heat treatment and triangular cross-section design preserve the sharp cutting edges of the flute that lets you reach full working length with less resistance and more control during the procedure.



Minimally Invasive

A maximum flute diameter of 1mm and a non-cutting tip work together to minimize transportation and preserve the tooth's structural integrity.



Exceptional Strength

Resists torsional stress and cyclic fatigue resulting in minimal breakage and reduced transportation.



Corresponding Gutta Percha and Paper Points

Gutta Percha and Paper points match canals shaped by ZenFlex ONE Reciprocating files.



Confidence, Fast, Smooth

The proprietary heat treatment and triangular cross section design preserves the sharp cutting edges of the flute that lets you reach the full working length of even complex root geometries quickly with less resistance and more control during the procedure. The flutes are ground after heat treatment to preserve the sharpness of the cutting edges.

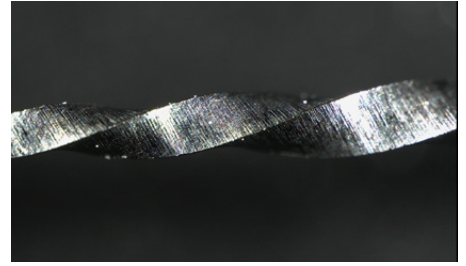
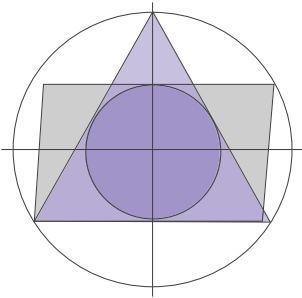


Image courtesy of Prof. Philippe Sleiman

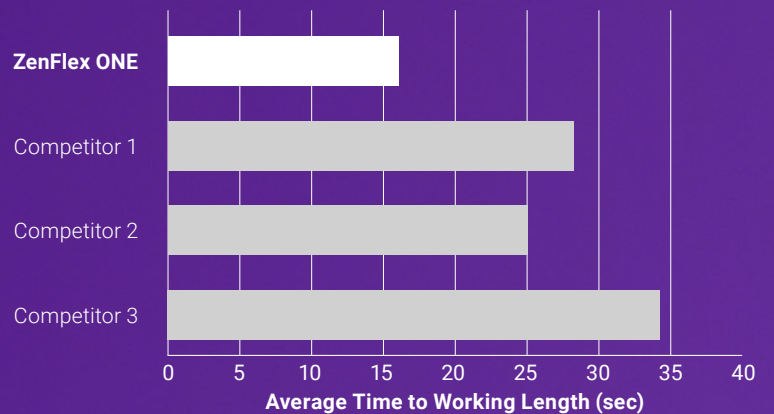


The large areas left on the ZenFlex ONE Triangular 3-point cutting edges, spread every 120 degrees, allow debris to be effectively be extracted coronally.

▲ ZenFlex ONE ■ Competitor file ○ Canal

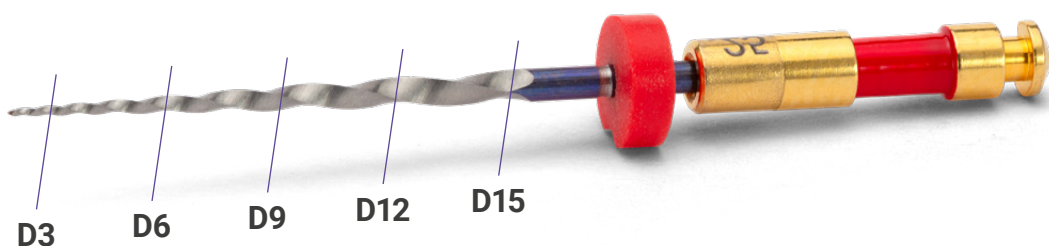
Finish Faster

ZenFlex ONE's smaller maximum flute diameter of 1mm, combined with the triangular cross-section with 3 cutting equilateral edges, results in increased cutting performance.



Preserve more dentin for a stronger root

The Maximum Flute Diameter and a non-cutting tip work together to minimize transportation and preserve the integrity of tooth structure. The maximum flute diameter (1mm) design of ZenFlex ONE and a non-cutting tip minimize transportation and preserves more tooth structure than traditional continuously tapered and progressively tapered files.



Exceptional Flexibility

ZenFlex ONE is designed with proprietary size-specific heat treatment that allows for excellent flexibility for up to 90° curves for all sizes.



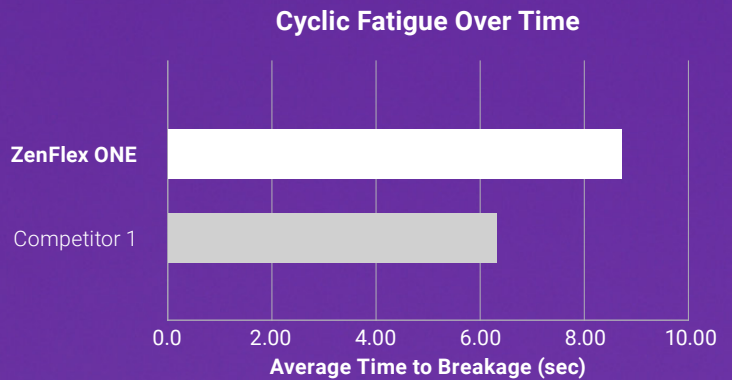
Minimize the Trade-Off Between Flexibility and Torsional Strength with The Zenflex ONE Reciprocating File System.

Canals shaped and obturated by ZenFlex ONE system, elements™ Connect and Apex Connect.



Cyclic Fatigue

The ZenFlex ONE files have 38% more resistance to cyclic fatigue when compared to competitor files of the corresponding size.



Customer testimonial

“ While other files have felt too stiff or too slow to progress down a canal, the ZenFlex ONE has been a great balance of flexibility, strength, and cutting efficiency to where I am able to confidently use it in a wide variety of cases. ”

Dr. Ferras Mashtoub, DDS



Download
Dr. Mashtoub
clinical case

ZenFlex ONE Reciprocating File System.

Perfect Balance of Efficiency, Reliability and Affordability

Gutta Percha Points and Paper Points

- Corresponding Gutta Percha match canals shaped by ZenFlex ONE Reciprocating files.
- Color matching Gutta Percha Points to match the corresponding ZenFlex ONE files.
- Paper Points available



Ordering Information

ZenFlex™ ONE

NiTi Shaping Files - Pack of 3

Size	21 mm	25 mm	31 mm
Small 20/06	818-2621	818-2622	818-2623
Primary 25/06	818-2624	818-2625	818-2626
Medium 35/06	818-2627	818-2628	818-2629
Large 45/06	818-2630	818-2631	818-2632

ZenFlex™ ONE

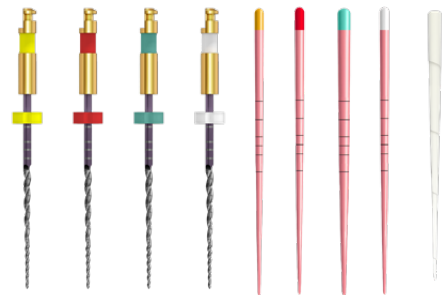
Gutta Percha Points - Pack of 50

Size	Ref. No.
Small 20/06	825-9720
Primary 25/06	825-9725
Medium 35/06	825-9735
Large 45/06	825-9745

ZenFlex™ ONE

Gutta Paper Points - Pack of 100

Size	Ref. No.
S, P, M, L	972-0130



**To Learn More About
Kerr Endodontic Solutions
Contact Your Kerr Rep**



For added flexibility and control, **ZenFlex ONE works with your preferred endodontic motor and handpieces**